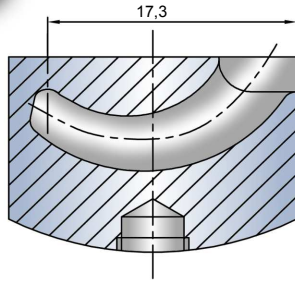
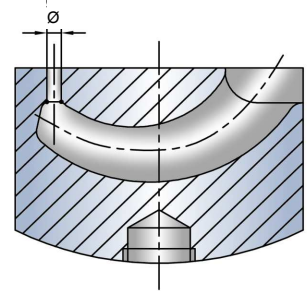


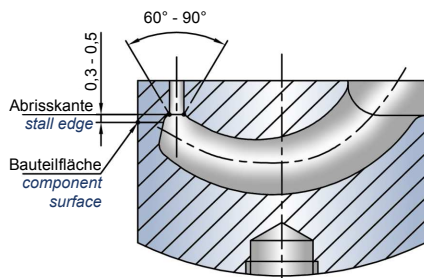
Kalottenkonstruktion „Standard“ „Standard“ Calotte design



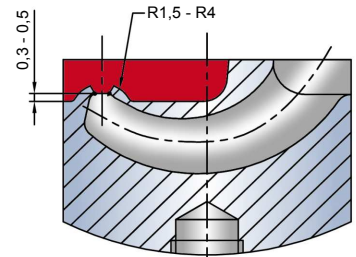
Kontur-Einsatz im Rohzustand
Contourable insert in unfinished state



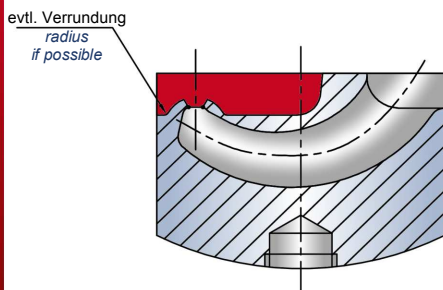
Durchmesser gemäß Tabelle festlegen
Diameter to be defined in accordance with the table



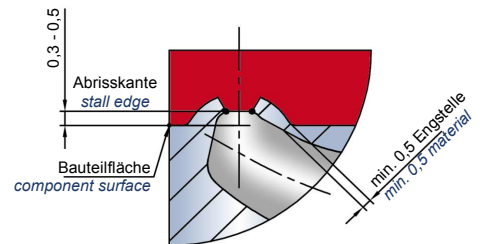
Bei Schnittpunkt Bohrung / Tunnel
Winkel von 60° bis 90° festlegen
*Define 60 to 90 angle at bore /
tunnel intersection point*



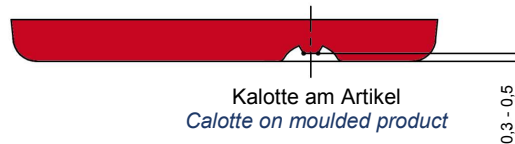
Die Wandstärke der Kalotte
beträgt min. 0,5 < max. 0,7 mm
*Calotte wall thickness to be
min. 0.5 < max. 0.7 mm*



Falls möglich Verrundung einbringen
Provide radius if possible

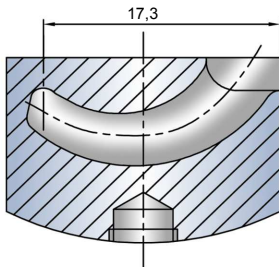


Fertige Kalottenkonstruktion
Finished calotte configuration

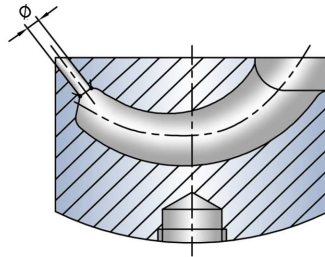


Kalotte am Artikel
Calotte on moulded product

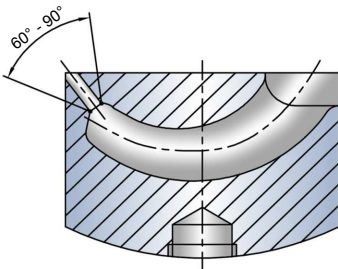
Kalottenkonstruktion „Geneigte Fläche“ "Inclined Surface" Calotte Design



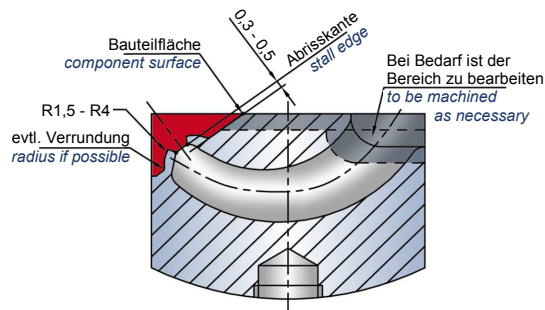
Kontur-Einsatz im Rohzustand
Contourable insert in unfinished state



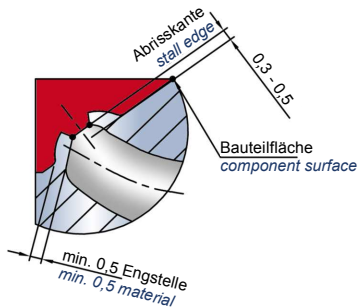
Durchmesser gemäß Tabelle festlegen
Diameter to be defined in accordance with the table



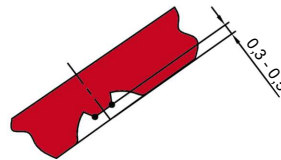
Bei Schnittpunkt Bohrung / Tunnel
Winkel von 60° bis 90° festlegen
Define 60 to 90 angle at bore /
tunnel intersection point



Die Wandstärke der Kalotte
beträgt min. 0,5 < max. 0,7 mm
Calotte wall thickness to be
min. 0.5 < max. 0.7 mm



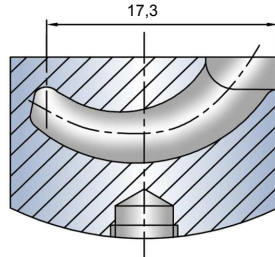
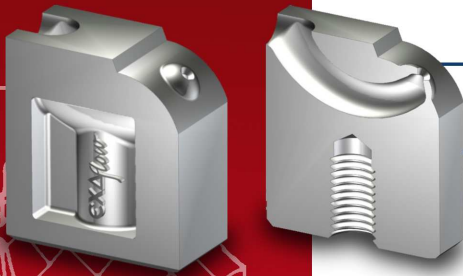
Falls möglich Verrundung einbringen
Provide radius if possible



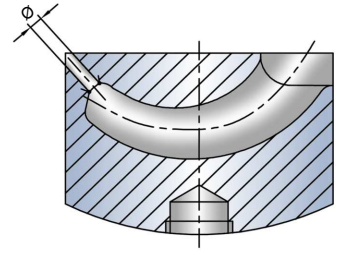
Kalotte am Artikel
Calotte on moulded product



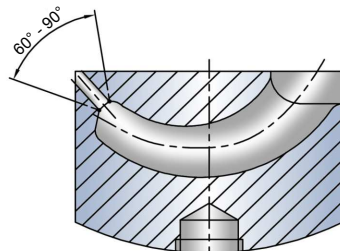
Kalottenkonstruktion „Gewölbte Fläche“ "Curved Surface" Calotte Design



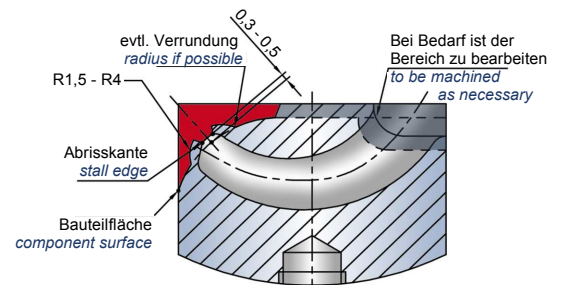
Kontur-Einsatz im Rohzustand
Contourable insert in unfinished state



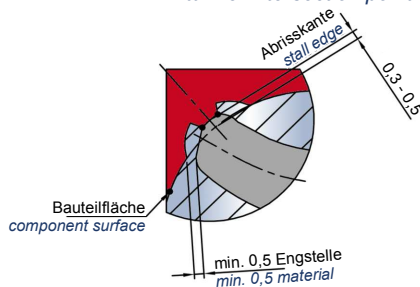
Durchmesser gemäß Tabelle festlegen
Diameter to be defined in accordance with the table



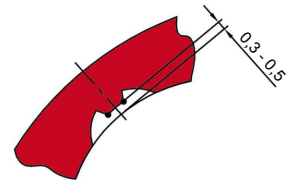
Bei Schnittpunkt Bohrung / Tunnel
Winkel von 60° bis 90° festlegen
*Define 60 to 90 angle at bore /
tunnel intersection point*



Die Wandstärke der Kalotte
beträgt min. 0,5 < max. 0,7 mm
*Calotte wall thickness to be
min. 0.5 < max. 0.7 mm*



Falls möglich Verrundung einbringen
Provide radius if possible



Kalotte am Artikel
Calotte on moulded product